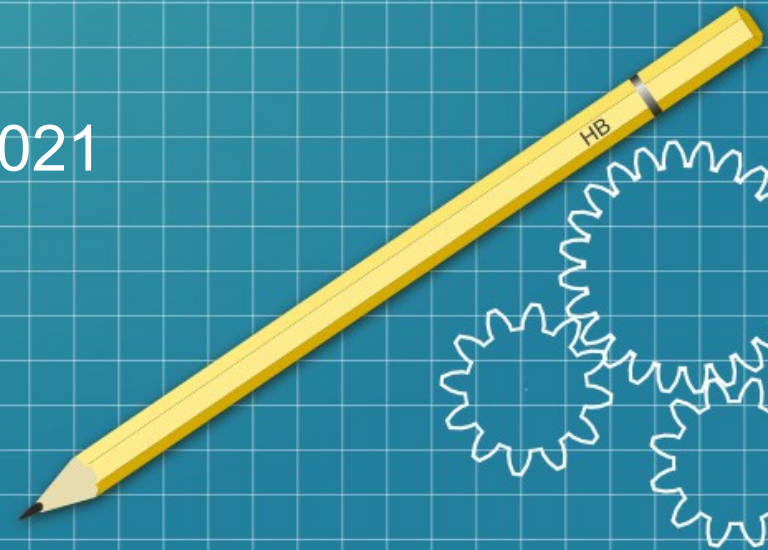


Android Boot Manager

Volla Community Days 2021



A bit of history.

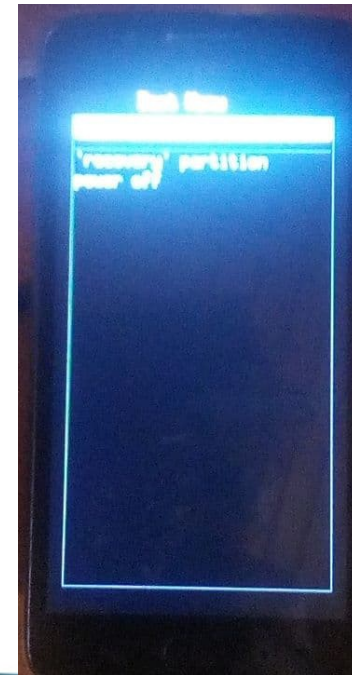
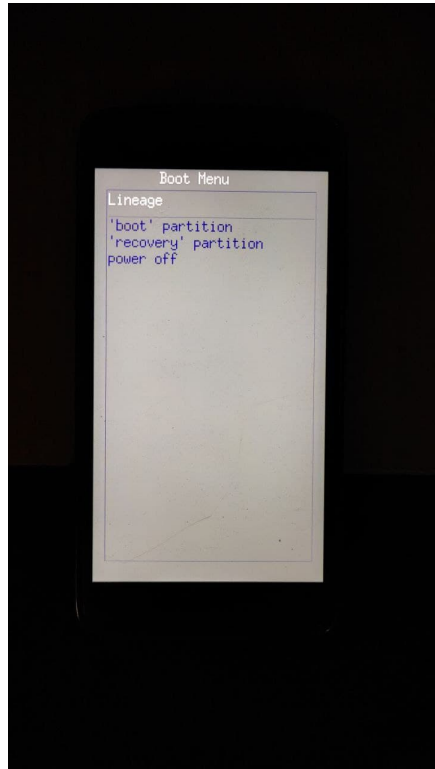
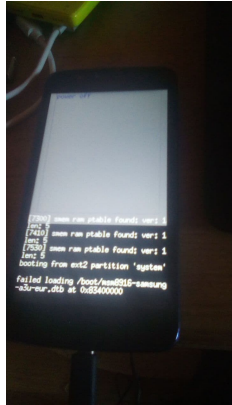


Android Boot Manager began in spring of 2020, after Luka ported lk2nd to Moto g5, he ported re-boot (lk2nd simple boot menu), then idea of new dualboot solution was born. At that time Dualboot Patcher was already dead.

After Luka decided to create new dualboot solution, he understood that he need app at least for Android. So he contacted Nick (nift4), asking for an app. Nift4 become second developer, and project was called Android Boot Manager.

Luka's moto g5 died, and project was frozen for a few months. But Hallo Welt Systems supported ABM developers with their devices.

A bit of history.



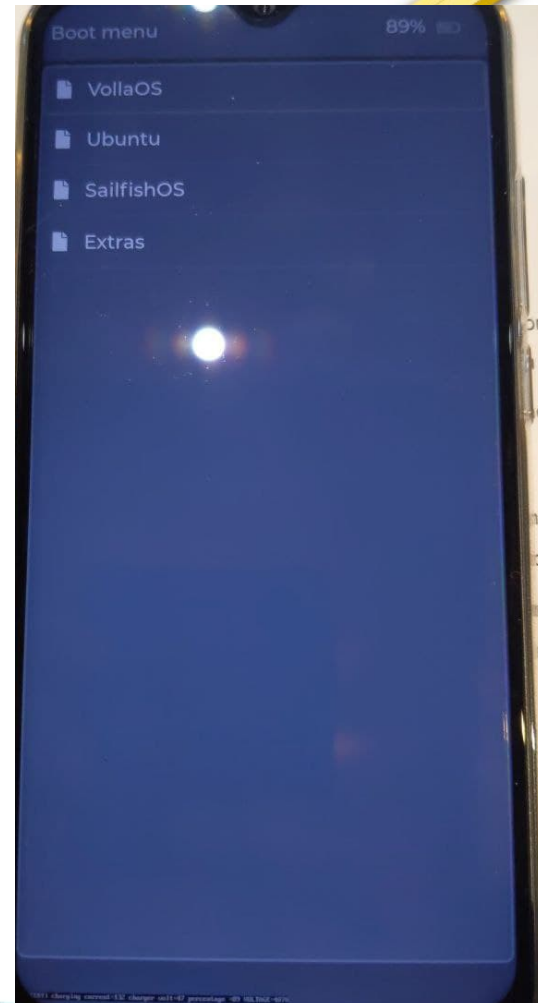
What is ABM, how it works.

ABM is a new dualboot solution, based on different bootloaders (uefi, mtk lk, lk2nd), but we are working on a bootloader-less solution too.



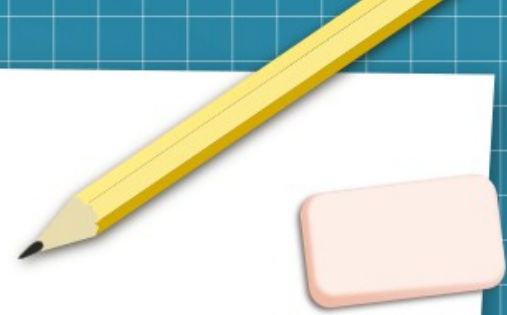
Design, GUI

Initially ABM had the UI drawn with simple function to draw line or text, but that was replaced with the LVGL library. It supports both dark and light theme. Most UI is done out of lists, to make it easy to use it with 3 buttons. However, a picture says more than thousand words:



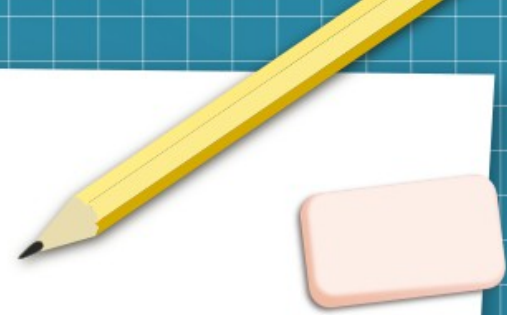
Use cases

- Dualbooting is useful...
- ...to try out an alternative operating system (without overwriting the existing installation)
- ...boot from a secure external storage (SD card) for special security like
 - ensuring an untampered operating system
 - prevent persistent viruses and tracking software



Features

- Easily flash the bootloader
- Bootmenu at start time
- Partition your SD card
- Multiboot
- Install Android, Ubuntu Touch, Sailfish OS
- Use functions for power users
- Autoboot specific system after an Timeout (not working yet)



Current status on Volla Phone



- ABM on Volla supports VollaOS 9 as main OS and it can boot Ubuntu Touch and SailfishOS from the SD card.
- VollaOS 10 support have some problems, but is partially implemented. The big problem here is that we can't boot Android 9-based OSes with 10 firmware due to many changes.
- GUI have lags, to be resolved.
- Android app is beta.

Thanks! Any questions?

